

US Army Corps of Engineers
Jacksonville District

SAFETY ON THIS JOB DEPENDS ON YOU

DEPARTMENT OF THE ARMY
JACKSONVILLE DISTRICT, CORPS OF ENGINEERS
JACKSONVILLE, FLORIDA

Checked By: GHR
Designed By: WRM
Drawn By: WRM
File No: W818EA-2022-0004
Change: MAR 2022

XXXXXXXXXXXXXXXXXXXX
XXXXXXXXXXXXXXXXXXXX
XXXXXXXXXXXXXXXXXXXX
XXXXXXXXXXXXXXXXXXXX
XXXXXXXXXXXXXXXXXXXX
XXXXXXXXXXXXXXXXXXXX
XXXXXXXXXXXXXXXXXXXX
XXXXXXXXXXXXXXXXXXXX
XXXXXXXXXXXXXXXXXXXX

INTRACASTAL WATERWAY
JACKSONVILLE TO MIAMI, FLORIDA
MARTIN COUNTY

**HYDROGRAPHIC EXAM SURVEY FY22
10-FOOT PROJECT**

STA. 19+00 THRU STA. 52+00 CUT M-11

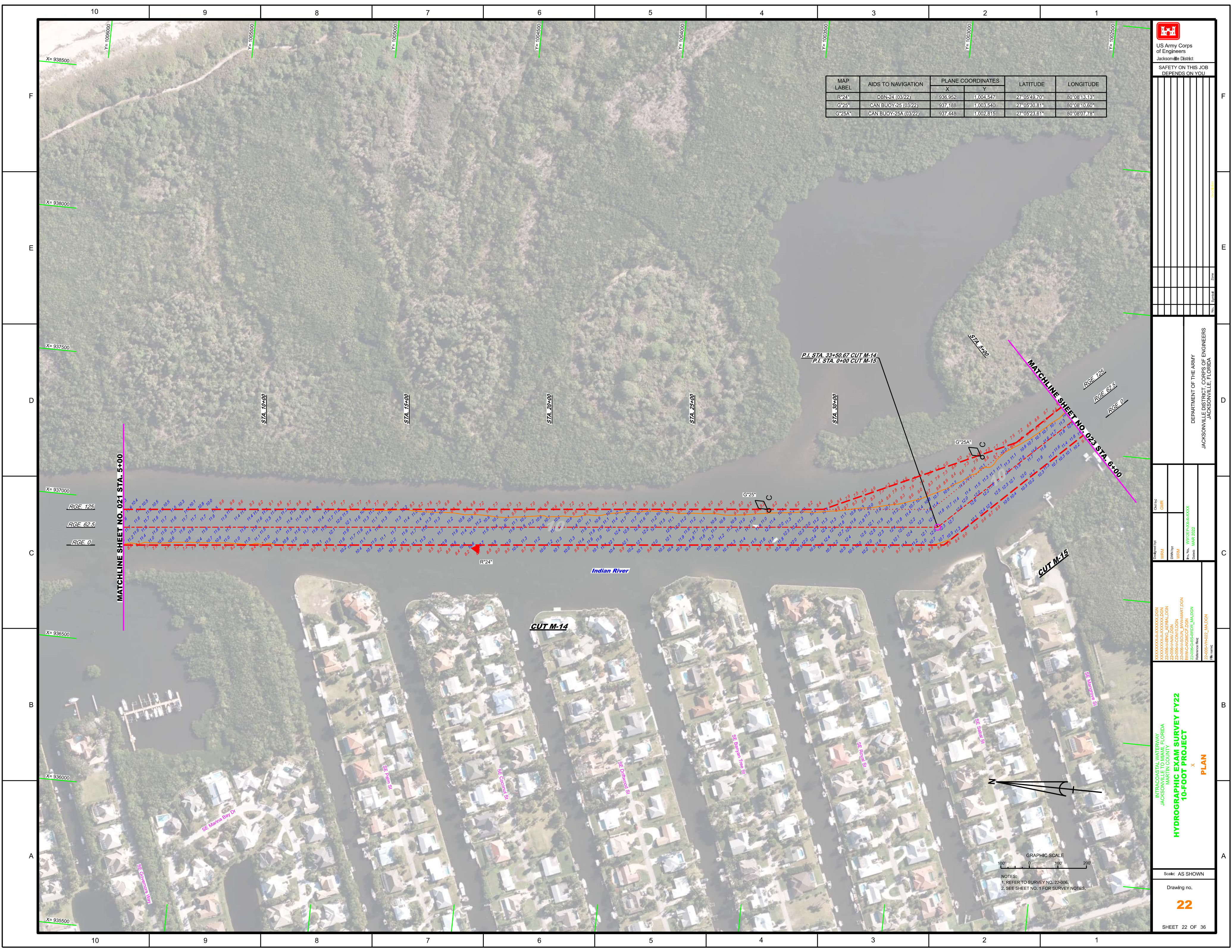
PLAN

Scale: AS SHOWN
Drawing no.
19
SHEET 19 OF 36

MAP LABEL	AIDS TO NAVIGATION	PLANE COORDINATES		LATITUDE	LONGITUDE
		X	Y		
R*18"	DBN-18 (03/22)	933.201	1,014.237	27°07'17.00"	80°08'53.91"



NOTES:
1. REFER TO SURVEY NO. 22-006.
2. SEE SHEET NO. 1 FOR SURVEY NOTES.



MAP LABEL	AIDS TO NAVIGATION	PLANE COORDINATES		LATITUDE	LONGITUDE
		X	Y		
R-24	DBN-24 (03/22)	936,952	1,004,547	27°05'49.70"	80°08'18.13"
G-25	CAN BUOY-25 (03/22)	937,188	1,003,540	27°05'30.81"	80°08'10.80"
G-25A	CAN BUOY-25A (03/22)	937,448	1,002,815	27°05'23.61"	80°08'07.78"

US Army Corps of Engineers
 Jacksonville District
**SAFETY ON THIS JOB
 DEPENDS ON YOU**

DEPARTMENT OF THE ARMY
 JACKSONVILLE DISTRICT, CORPS OF ENGINEERS
 JACKSONVILLE, FLORIDA

Client: GHR
 Designer: WRM
 Designer: WRM
 Designer: WRM
 Date: 03/23/2022
 Project: 22-0005-HA2Z_MALDN

INTRACOASTAL WATERWAY
 JACKSONVILLE TO MIAMI, FLORIDA
 MARTIN COUNTY
**HYDROGRAPHIC EXAM SURVEY FY22
 10-FOOT PROJECT**

Scale: AS SHOWN

Drawing no.
22

SHEET 22 OF 36



NOTES:
 1. REFER TO SURVEY NO. 22-0006
 2. SEE SHEET NO. 1 FOR SURVEY NOTES.

MAP LABEL	AIDS TO NAVIGATION	PLANE COORDINATES		LATITUDE	LONGITUDE
		X	Y		
G*27	DBN-27 (03/22)	938,981	1,001,218	27°05'07.69"	80°07'50.94"
R*28	DBN-28 (03/22)	939,151	1,000,411	27°04'59.69"	80°07'49.12"



US Army Corps of Engineers
Jacksonville District

SAFETY ON THIS JOB DEPENDS ON YOU

DEPARTMENT OF THE ARMY
JACKSONVILLE DISTRICT, CORPS OF ENGINEERS
JACKSONVILLE, FLORIDA

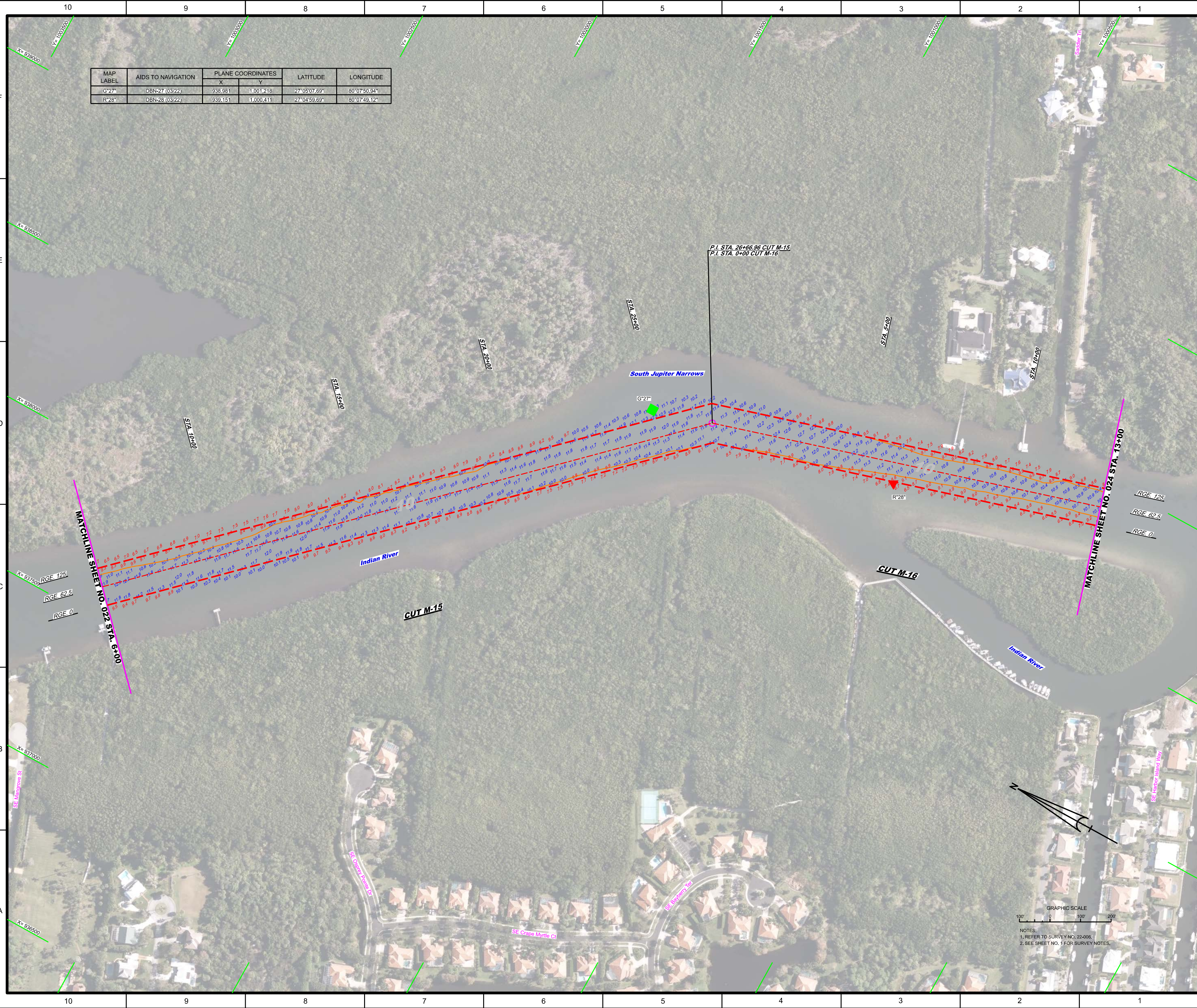
INTRACOASTAL WATERWAY
JACKSONVILLE TO MIAMI, FLORIDA
MARTIN COUNTY

**HYDROGRAPHIC EXAM SURVEY FY22
10-FOOT PROJECT**

STA. 6+00 CUT M-15 THRU STA. 13+00 CUT M-16
PLAN

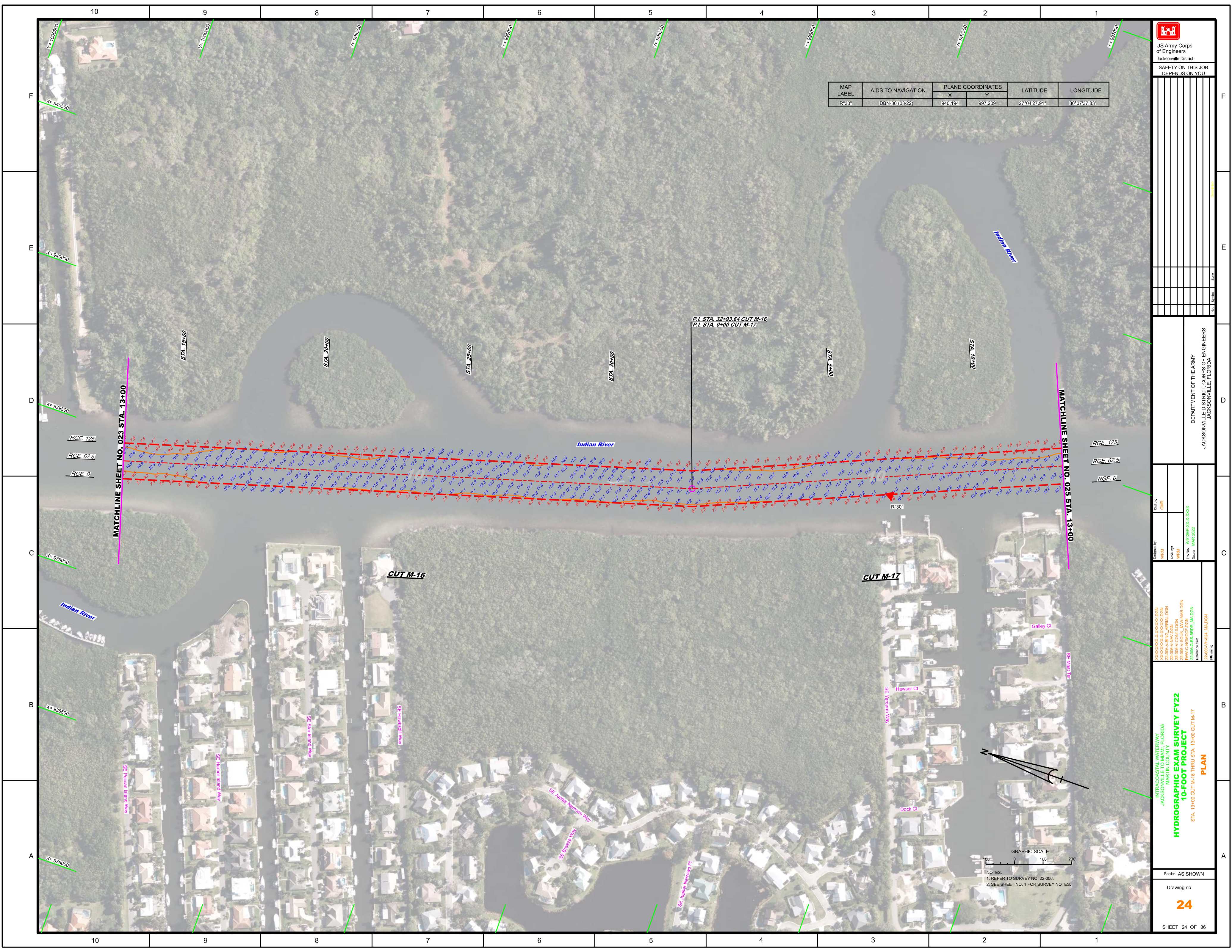
Scale: AS SHOWN
Drawing no.
23

SHEET 23 OF 36



GRAPHIC SCALE
0 100 200

NOTES:
1. REFER TO SURVEY NO. 22-006.
2. SEE SHEET NO. 1 FOR SURVEY NOTES.



MAP LABEL	AIDS TO NAVIGATION	PLANE COORDINATES		LATITUDE	LONGITUDE
		X	Y		
R*30"	DBN-30 (03/22)	940,194	997,209	27°04'27.81"	80°07'37.83"



 US Army Corps of Engineers
 Jacksonville District
 SAFETY ON THIS JOB
 DEPENDS ON YOU

DEPARTMENT OF THE ARMY
 JACKSONVILLE DISTRICT, CORPS OF ENGINEERS
 JACKSONVILLE, FLORIDA

Call by: GHR
 Designated by: WRM
 Drawn by: WRM
 File No.: W915EPA-MA-0000000000
 Date: MAR 2022

INTRACOASTAL WATERWAY
 JACKSONVILLE TO MIAMI, FLORIDA
 MARTIN COUNTY
HYDROGRAPHIC EXAM SURVEY FY22
10-FOOT PROJECT
 STA. 13+00 CUT M-16 THRU STA. 13+00 CUT M-17
PLAN

Scale: AS SHOWN
 Drawing no.
24
 SHEET 24 OF 36

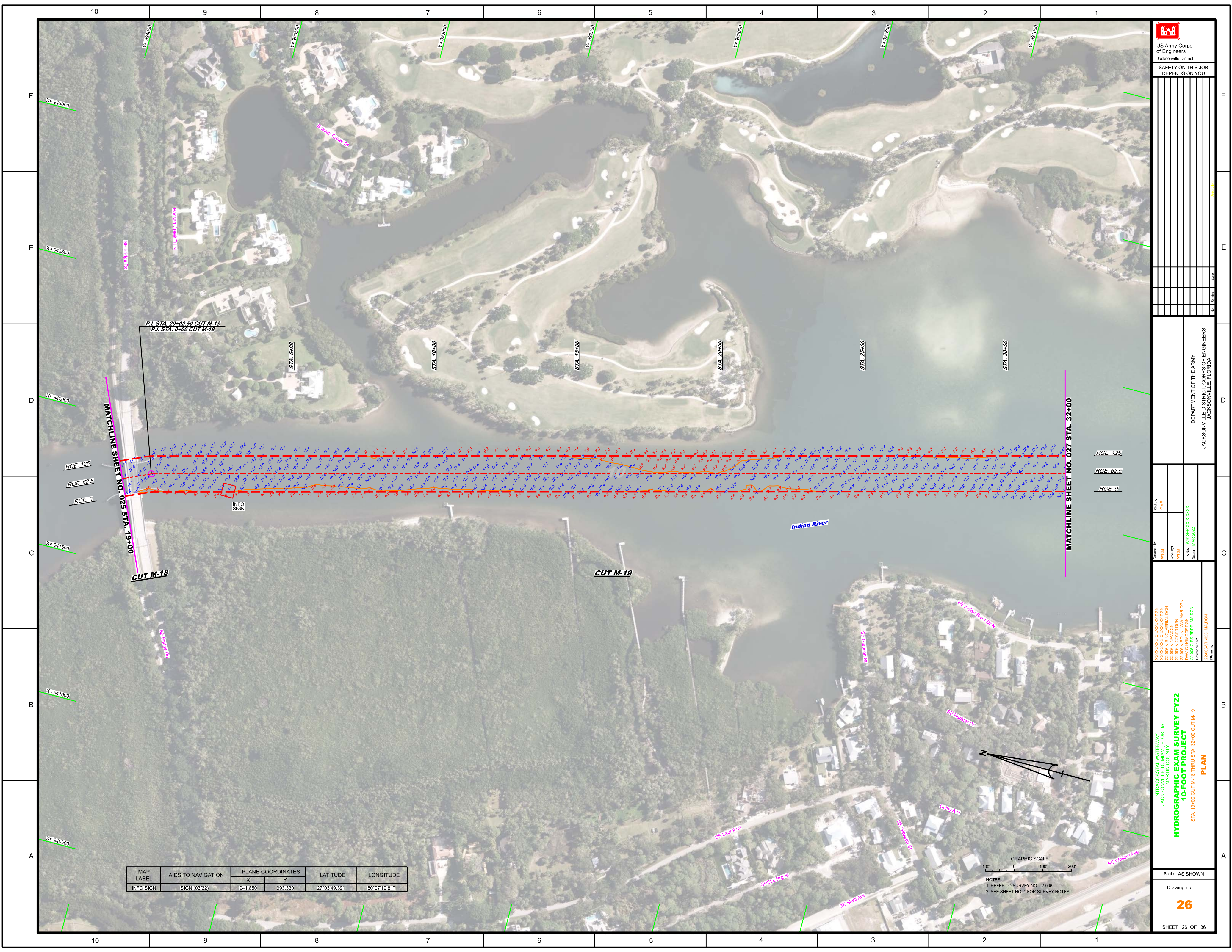
GRAPHIC SCALE
 0 100 200
 NOTES:
 1. REFER TO SURVEY NO. 22-006.
 2. SEE SHEET NO. 1 FOR SURVEY NOTES.

MATCHLINE SHEET NO. 025 STA. 13+00

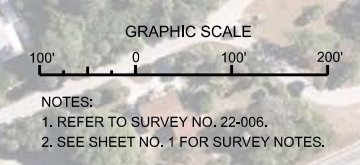
MATCHLINE SHEET NO. 023 STA. 13+00

P.I. STA. 32+93.64 CUT M-16
 P.I. STA. 0+00 CUT M-17

10 9 8 7 6 5 4 3 2 1
 F
 E
 D
 C
 B
 A



MAP LABEL	AIDS TO NAVIGATION	PLANE COORDINATES		LATITUDE	LONGITUDE
		X	Y		
INFO SIGN	SIGN (03/22)	941,850	993,830	27°03'49.39"	80°07'19.81"



US Army Corps of Engineers
Jacksonville District

SAFETY ON THIS JOB
DEPENDS ON YOU

Dept. No. _____
Drawing No. _____
Scale: AS SHOWN

DEPARTMENT OF THE ARMY
JACKSONVILLE DISTRICT, CORPS OF ENGINEERS
JACKSONVILLE, FLORIDA

Checked By: GHR
Designed By: WRM
Drawn By: WRM
File No.: W915EPA-00-000000
Date: MAR 2022

INTRACOASTAL WATERWAY
JACKSONVILLE TO MIAMI, FLORIDA
MARTIN COUNTY

HYDROGRAPHIC EXAM SURVEY FY22
10-FOOT PROJECT

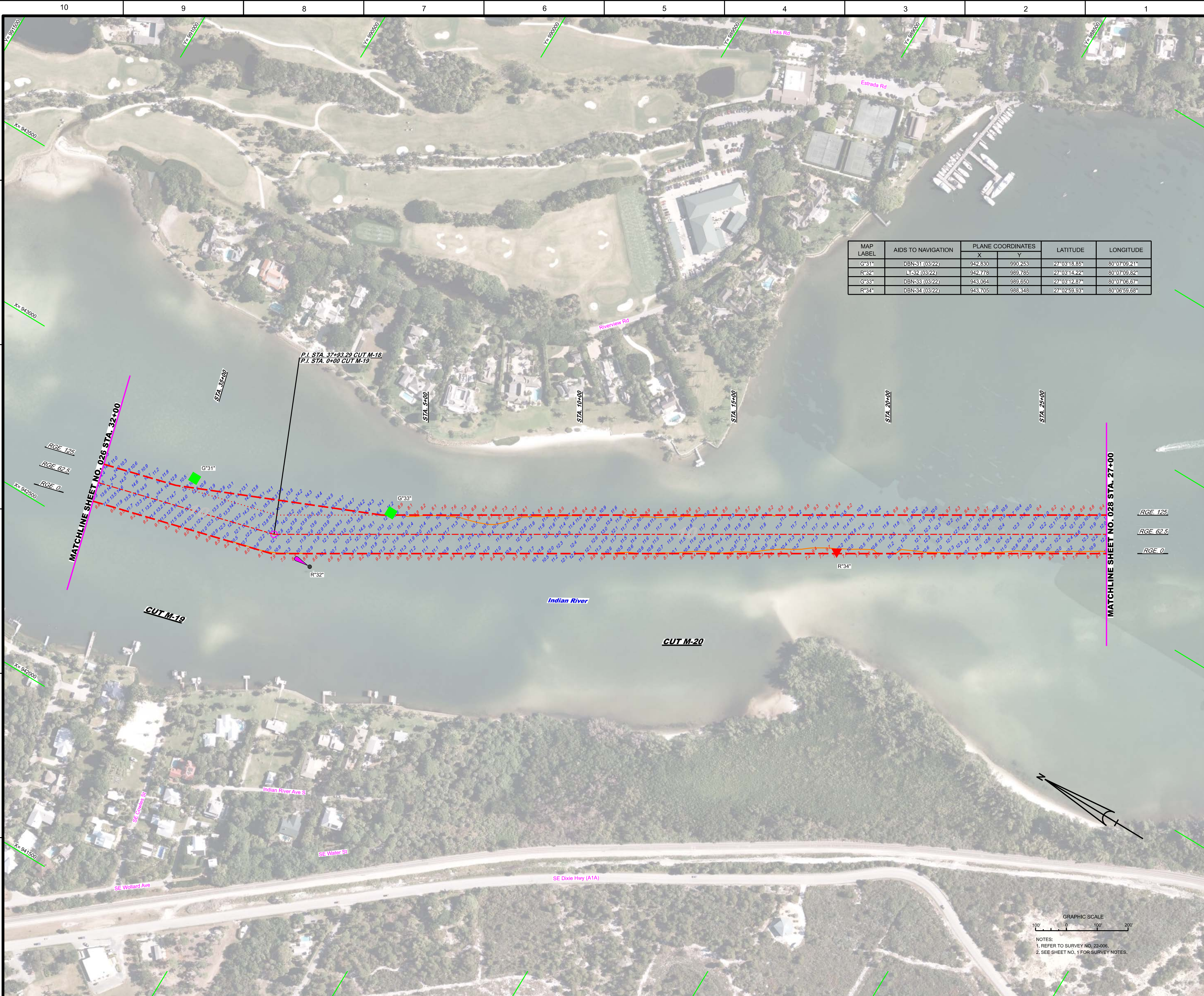
STA. 19+00 CUT M-18 THRU STA. 32+00 CUT M-19

PLAN

Scale: AS SHOWN

Drawing no.
26

SHEET 26 OF 36

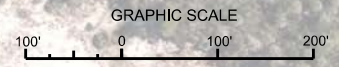


MAP LABEL	AIDS TO NAVIGATION	PLANE COORDINATES		LATITUDE	LONGITUDE
		X	Y		
G*31*	DBN-31 (03/22)	942,830	990,253	27°03'18.85"	80°07'09.21"
R*32*	LT-32 (03/22)	942,778	989,785	27°03'14.22"	80°07'09.82"
G*33*	DBN-33 (03/22)	943,064	989,650	27°03'12.87"	80°07'06.67"
R*34*	DBN-34 (03/22)	943,705	988,348	27°02'59.93"	80°06'59.68"

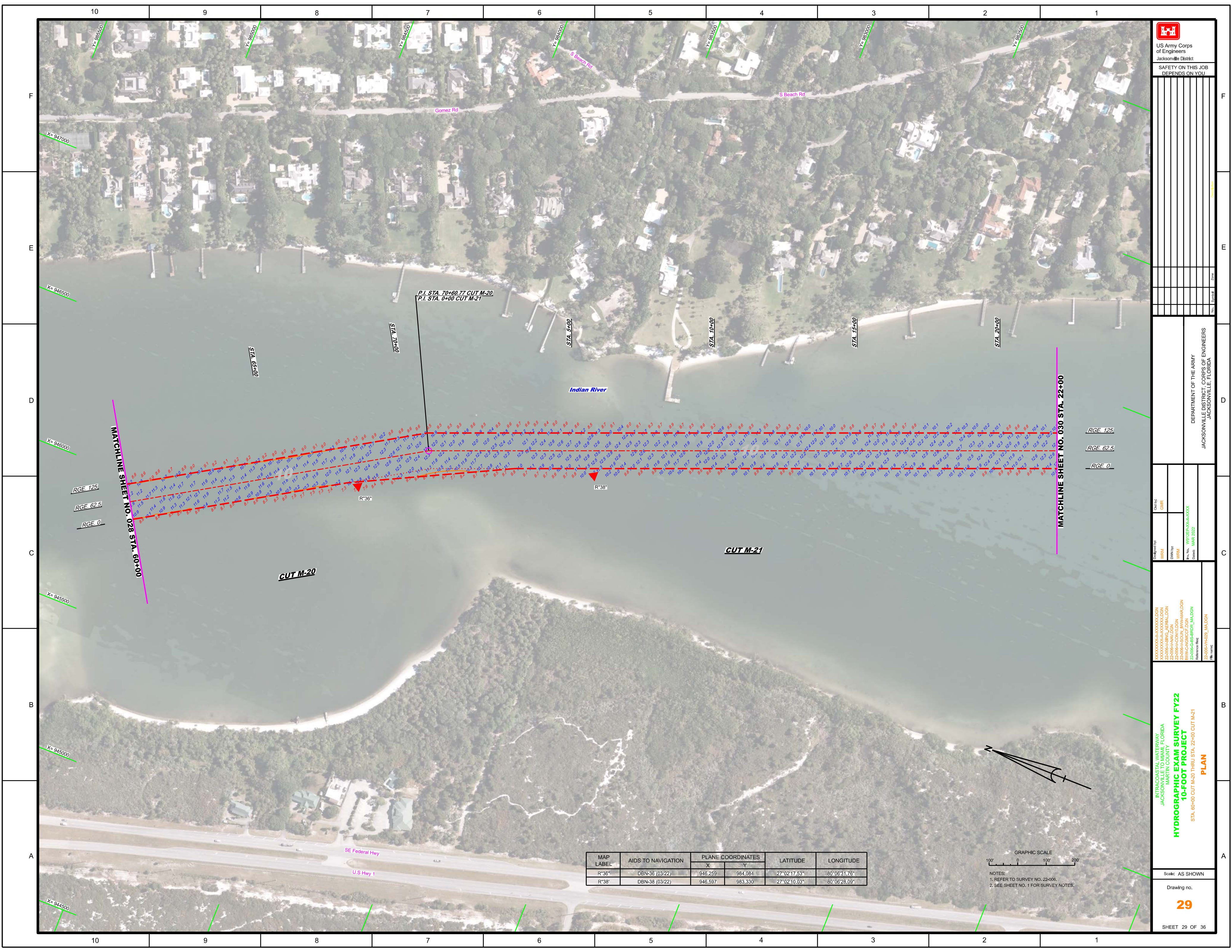
DEPARTMENT OF THE ARMY
 JACKSONVILLE DISTRICT, CORPS OF ENGINEERS
 JACKSONVILLE, FLORIDA

CHART: GHR
 DESIGNED BY: WRM
 DRAWN BY: WRM
 FILE NO: W9125P-66-0000
 DATE: MAR 2022

INTRACOASTAL WATERWAY
 JACKSONVILLE TO MIAMI, FLORIDA
 MARTIN COUNTY
HYDROGRAPHIC EXAM SURVEY FY22
10-FOOT PROJECT
 STA. 32+00 CUT M-18 THRU STA. 27+00 CUT M-19
PLAN



NOTES:
 1. REFER TO SURVEY NO. 22-006.
 2. SEE SHEET NO. 1 FOR SURVEY NOTES.



US Army Corps of Engineers
Jacksonville District

SAFETY ON THIS JOB
DEPENDS ON YOU

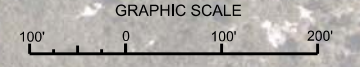
DEPARTMENT OF THE ARMY
JACKSONVILLE DISTRICT, CORPS OF ENGINEERS
JACKSONVILLE, FLORIDA

Drawn by: WRM
Checked by: GHR
Date: MAR 2022

22-00000-XXXXXXX.DGN
22-00000-XXXXXXX.DGN
22-00000-XXXXXXX.DGN
22-00000-XXXXXXX.DGN
22-00000-XXXXXXX.DGN
22-00000-XXXXXXX.DGN
22-00000-XXXXXXX.DGN

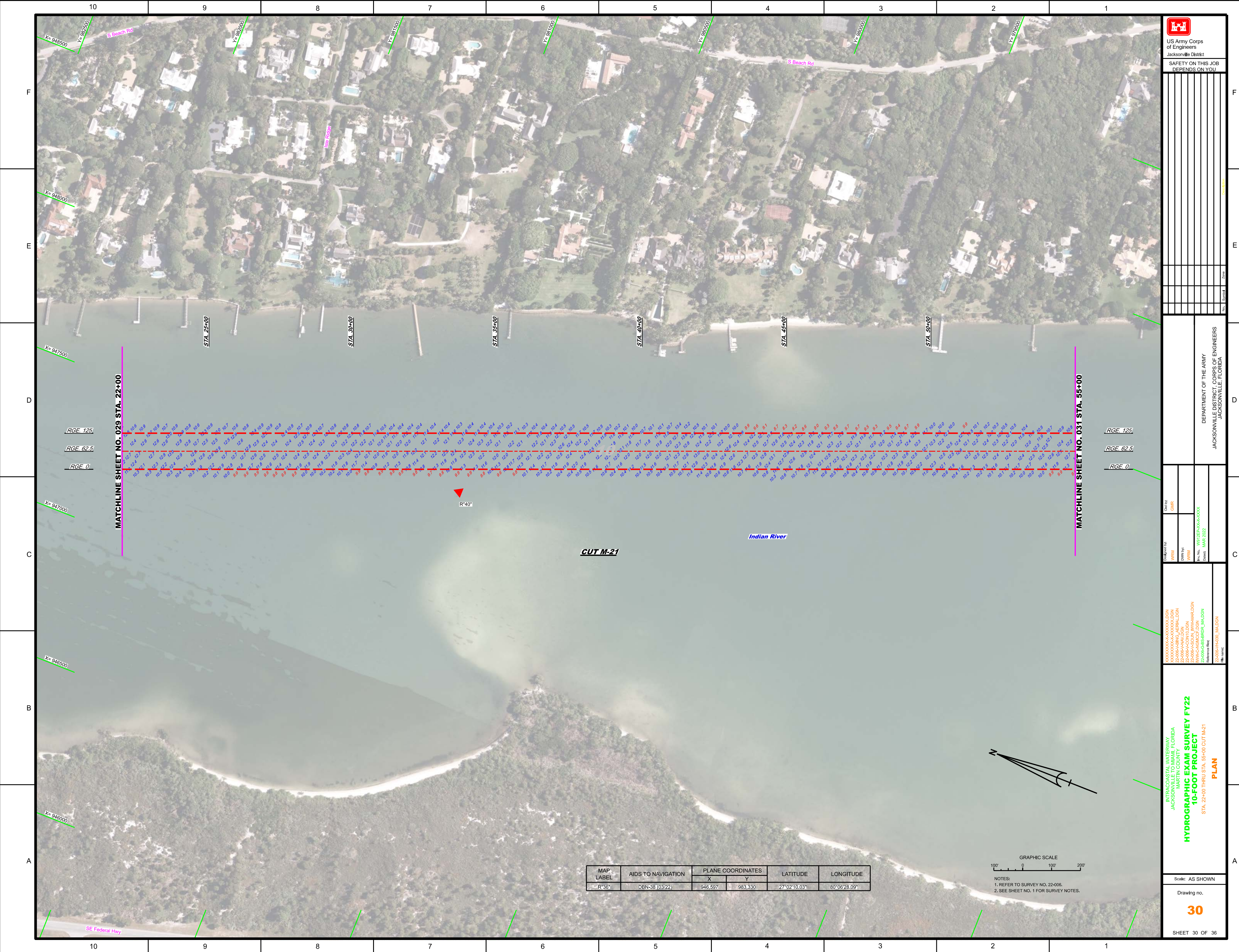
INTRACOASTAL WATERWAY
JACKSONVILLE TO MIAMI, FLORIDA
MARTIN COUNTY
HYDROGRAPHIC EXAM SURVEY FY22
10-FOOT PROJECT
STA. 60+00 CUT M-20 THRU STA. 22+00 CUT M-21
PLAN

MAP LABEL	AIDS TO NAVIGATION	PLANE COORDINATES		LATITUDE	LONGITUDE
		X	Y		
R*36	DBN-36 (03/22)	946,259	984,084	27°02'17.53"	80°06'31.76"
R*38	DBN-38 (03/22)	946,597	983,330	27°02'10.03"	80°06'28.09"



NOTES:
1. REFER TO SURVEY NO. 22-006.
2. SEE SHEET NO. 1 FOR SURVEY NOTES.

Scale: AS SHOWN
Drawing no.



US Army Corps of Engineers
Jacksonville District
SAFETY ON THIS JOB DEPENDS ON YOU

DATE	BY	REVISION

DEPARTMENT OF THE ARMY
JACKSONVILLE DISTRICT, CORPS OF ENGINEERS
JACKSONVILLE, FLORIDA

Call by: GMR
Designed by: WRM
Drawn by: WRM
File No.: W8125-00-000-000
Checked: MAR 2022

DATE	BY	REVISION

XXXXXXXXXXXXXXXXXXXXX.DGN
XXXXXXXXXXXXXXXXXXXXX.DGN
XXXXXXXXXXXXXXXXXXXXX.DGN
XXXXXXXXXXXXXXXXXXXXX.DGN
XXXXXXXXXXXXXXXXXXXXX.DGN
XXXXXXXXXXXXXXXXXXXXX.DGN
XXXXXXXXXXXXXXXXXXXXX.DGN
XXXXXXXXXXXXXXXXXXXXX.DGN
XXXXXXXXXXXXXXXXXXXXX.DGN

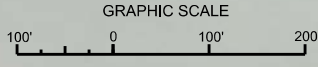
INTRACOASTAL WATERWAY
JACKSONVILLE TO MIAMI, FLORIDA
MARTIN COUNTY

HYDROGRAPHIC EXAM SURVEY FY22 10-FOOT PROJECT

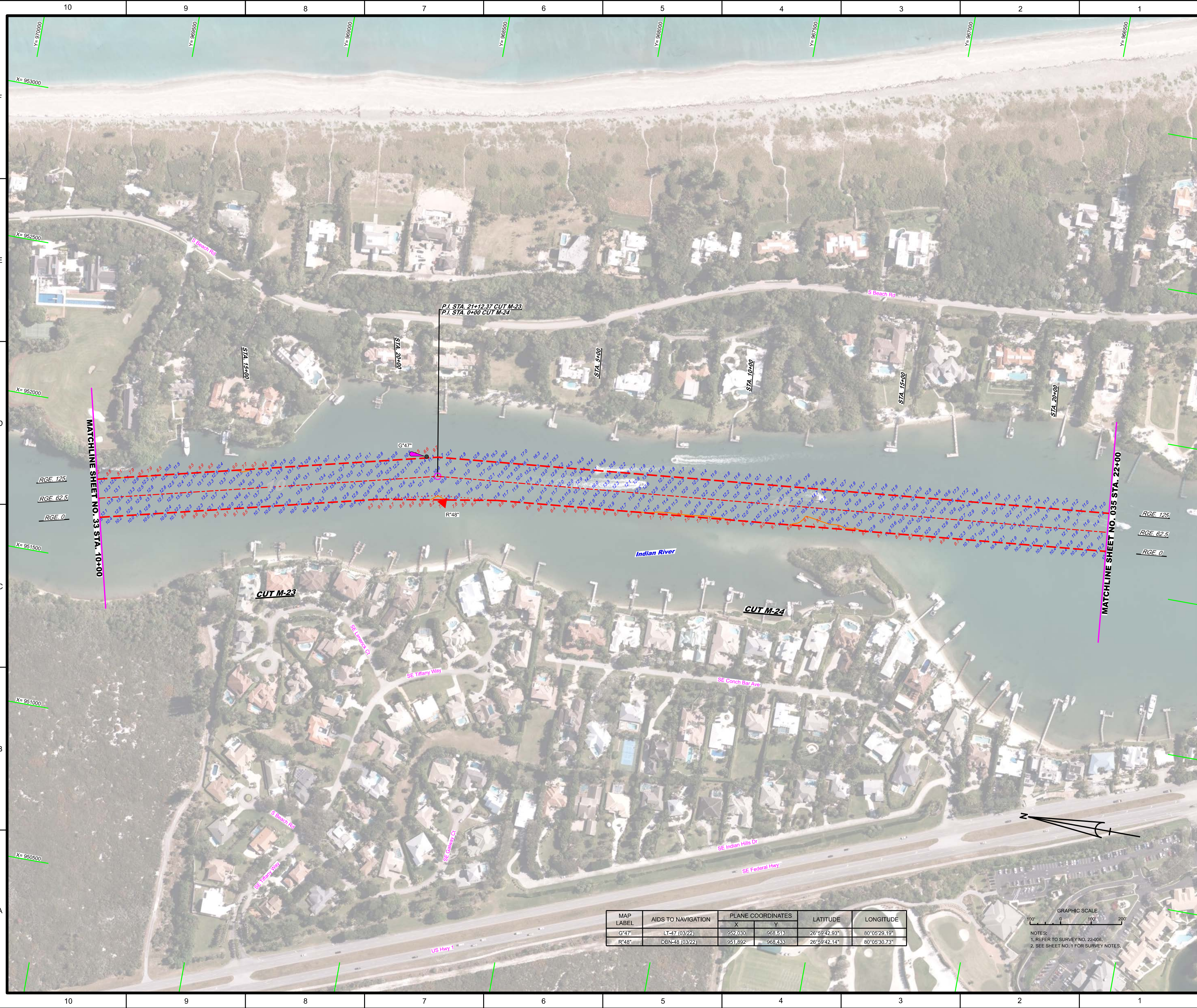
STA. 22+00 THRU STA. 55+00 CUT M-21
PLAN

Scale: AS SHOWN
Drawing no. **30**
SHEET 30 OF 36

MAP LABEL	AIDS TO NAVIGATION	PLANE COORDINATES		LATITUDE	LONGITUDE
		X	Y		
R-36*	DBN-38 (03/22)	946,597	983,330	27°02'10.03"	80°06'28.09"

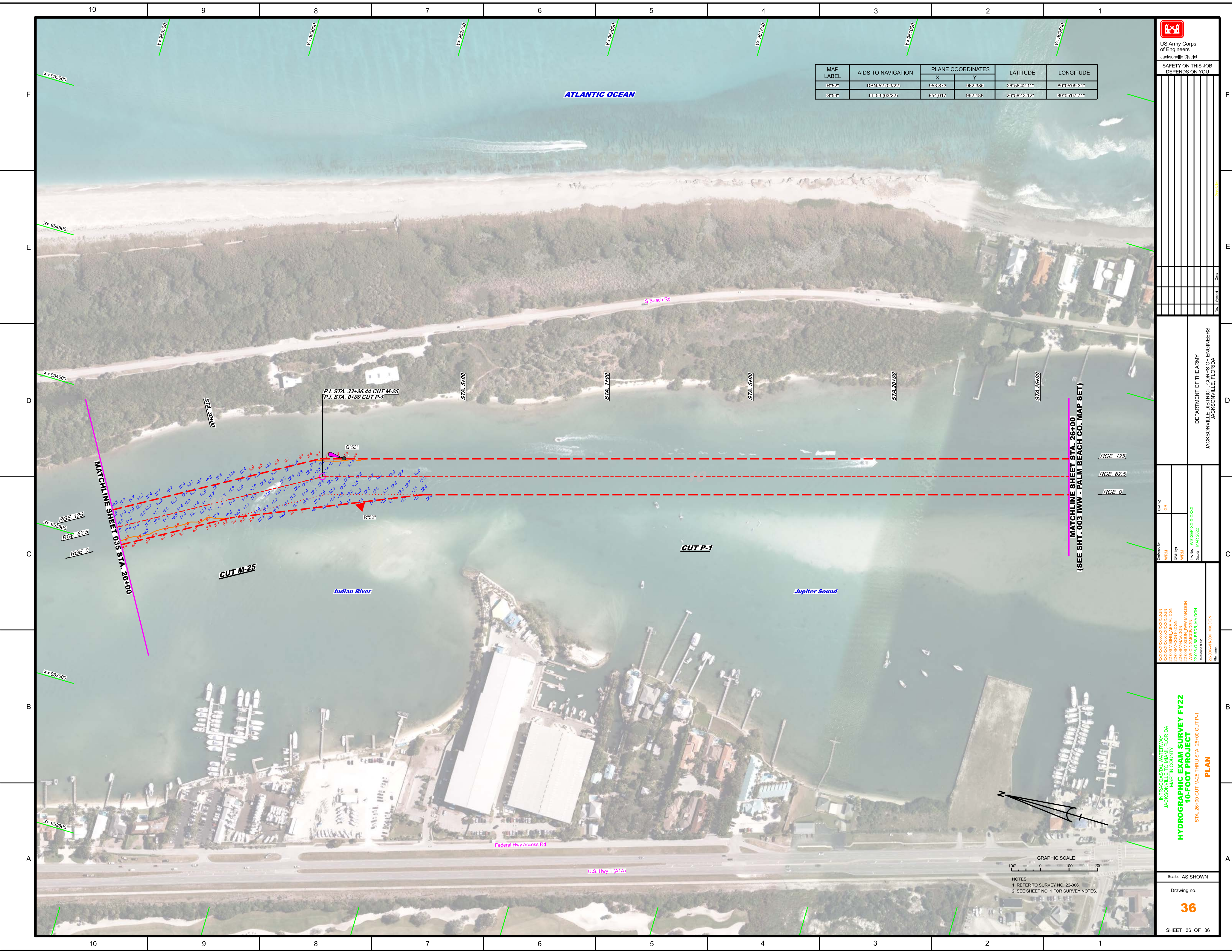


NOTES:
1. REFER TO SURVEY NO. 22-006.
2. SEE SHEET NO. 1 FOR SURVEY NOTES.



MAP LABEL	AIDS TO NAVIGATION	PLANE COORDINATES		LATITUDE	LONGITUDE
		X	Y		
G*47"	LT-47 (03/22)	952,030	968,513	26°59'42.93"	80°05'29.19"
R*48"	DBN-48 (03/22)	951,892	968,433	26°59'42.14"	80°05'30.73"

GRAPHIC SCALE
 100' 0 100' 200'
 NOTES:
 1. REFER TO SURVEY NO. 23-906.
 2. SEE SHEET NO. 1 FOR SURVEY NOTES.



MAP LABEL	AIDS TO NAVIGATION	PLANE COORDINATES		LATITUDE	LONGITUDE
		X	Y		
R ⁵² *	DBN-52 (03/22)	953,873	962,385	26°58'42.11"	80°05'09.31"
G ⁵³ *	LT-53 (03/22)	954,017	962,488	26°58'43.12"	80°05'07.71"



US Army Corps of Engineers
 Jacksonville District
 SAFETY ON THIS JOB DEPENDS ON YOU

DEPARTMENT OF THE ARMY
 JACKSONVILLE DISTRICT, CORPS OF ENGINEERS
 JACKSONVILLE, FLORIDA

Check By:	GRL
Designed By:	WRM
DWG. No.:	WRM
Date:	03/15/23
Check:	MAR 2023

XXXXXXXXXXXXXXXXXXXX	XXXXXXXXXXXXXXXXXXXX
XXXXXXXXXXXXXXXXXXXX	XXXXXXXXXXXXXXXXXXXX
XXXXXXXXXXXXXXXXXXXX	XXXXXXXXXXXXXXXXXXXX
XXXXXXXXXXXXXXXXXXXX	XXXXXXXXXXXXXXXXXXXX
XXXXXXXXXXXXXXXXXXXX	XXXXXXXXXXXXXXXXXXXX
XXXXXXXXXXXXXXXXXXXX	XXXXXXXXXXXXXXXXXXXX
XXXXXXXXXXXXXXXXXXXX	XXXXXXXXXXXXXXXXXXXX

**INTRACOASTAL WATERWAY
 JACKSONVILLE TO MIAMI, FLORIDA
 MARTIN COUNTY
 10-FOOT PROJECT**
 STA. 26+00 CUT M-25 THRU STA. 26+00 CUT P-1
PLAN

Scale: AS SHOWN
 Drawing no.
36
 SHEET 36 OF 36

GRAPHIC SCALE
 100' 0' 100' 200'

NOTES:
 1. REFER TO SURVEY NO. 22-006.
 2. SEE SHEET NO. 1 FOR SURVEY NOTES.